

# LANDMARK PAPER INDEX: DEFINITION AND APPLICATION TO RHEOLOGICAL ( $\eta$ -) JOURNALS

M. KRÖGER

Polymer Physics, Department of Materials, ETH Zurich, 8093 Zurich, Switzerland

\*E-mail: [mk@mat.ethz.ch](mailto:mk@mat.ethz.ch)

Fax: x41.44.6321076

Received: 14.9.2006, Final version: 5.11.2006

## ABSTRACT:

We define a Landmark Paper Index (LPI), calculate and analyze indices for all papers published in rheological journals (' $\eta$ -journals') between 1990 and 2006. This paper offers some information about the criteria influencing the impact of publications on the (scientific) community. In opposite to the well known Impact Factor (journal sensitive) or the number of citations (article sensitive, publication year insensitive) the LPI helps to identify established and potential breakthrough contributions by considering the number of citations per year after publication, in a way which does not overestimate the few, highly cited, articles when performing averages. We discuss the effect of formal criteria on the LPI.

## ZUSAMMENFASSUNG:

Wir definieren einen Landmark Paper Index (LPI), berechnen und analysieren Indizes für alle Artikel, die in rheologischen Journalen (' $\eta$ -Journalen') zwischen 1990 und 2006 erschienen. Der vorliegende Artikel gibt Aufschluss über Kriterien, die den Einfluss von Publikationen auf die Leserschaft beeinflussen. Im Gegensatz zu dem wohl-bekanntesten Impact Factor (Journal-sensitiv) oder der Zahl der Zitierungen (Artikel-sensitiv, Publikationsjahr-insensitiv) hilft der LPI dabei, etablierte und potentielle Publikations-Meilensteine zu identifizieren, indem er die Zahl der Zitierungen pro Jahr nach Veröffentlichung in einer Weise berücksichtigt, die die Zahl der wenigen sehr hoch zitierten Artikel nicht übermäßig berücksichtigt, wenn es darum geht, Aussagen über Mittelwerte zu machen. Wir diskutieren den Effekt formaler Kriterien auf den LPI.

## RÉSUMÉ:

Nous avons défini un Landmark Paper Index (LPI), calculé et analysé des indicateurs pour toutes les publications publiées dans des journaux de rhéologie (' $\eta$ -journaux') entre 1990 et 2006. Cette publication fournit des informations sur les critères influençant l'impact des publications sur la communauté scientifique. Contrairement au fameux Impact Factor (dépendant du journal) ou au nombre de citations (dépendant de l'article, indépendant de l'année de publication), le LPI permet d'identifier des contributions marquantes établies ou potentielles en considérant le nombre de citations par an après publication, de sorte qu'il ne surestime pas le peu d'articles très fortement cités lors de l'opération de moyennage. Nous discutons ici de l'effet de critères formels sur le LPI.

**KEY WORDS:** Landmark Paper Index, Impact Factor, journal impact, author impact, article impact, criteria, evaluation, quality, breakthrough index, rheological journals

## 1 INTRODUCTION

In order to appreciate the need to define a novel index below, we start introducing a related, most often used measure in research evaluations, the so called ISI Impact Factor. It is in use to quantify quality of publications, effective prices of journals, and the scientific impact, not only of journals, but also of authors based on the number of articles and journals in which they published. Recent years have seen growing interest in the Impact Factor, and the dispute about its value [1 - 10]. The Impact Factor for a given year and journal is defined as the total number of citations received in that year to articles published in the

previous two years, divided by the total number of citable items (source items) published by the journal in those two years. Clearly, according to its definition the Impact Factor depends not only on the number of citations, but also on what the ISI defines as a source item. When comparing the rankings of journals within a given subject, care must be exercised in attaching too much importance to apparent positions in the rankings [1-10]. Since the Impact Factor is an average measure, there is some element of error margin on either side. Recent citation analyses have estimated that the variations in Impact Factor due to statistical noise alone are as much as 40% for

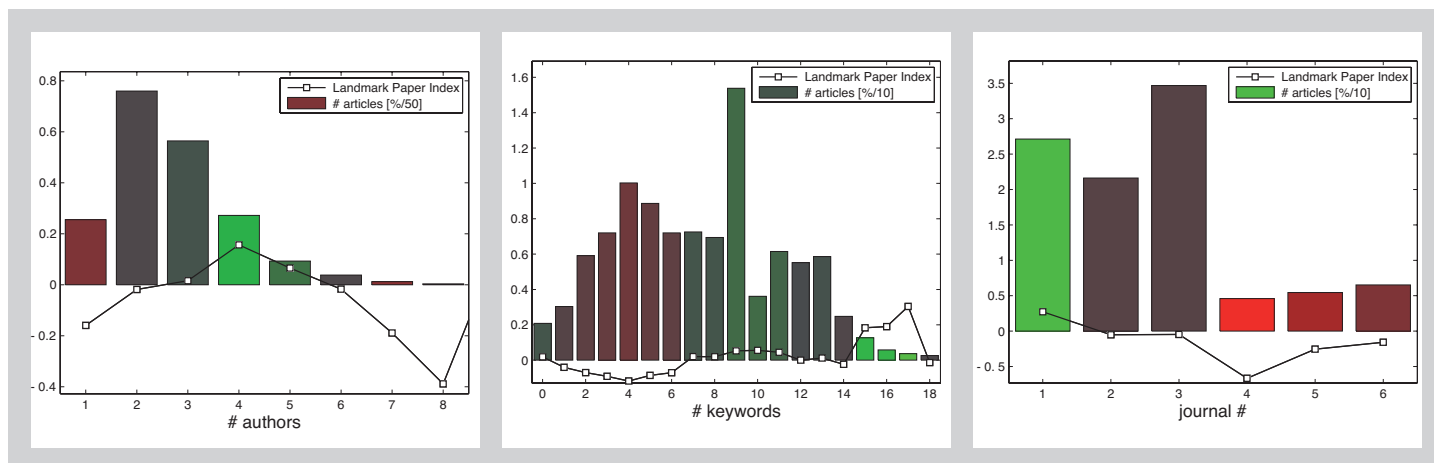


Figure 7 (left): Number of authors and their correlation with the LPI.

Figure 8 (middle): Number of keywords published with articles versus LPI.

Figure 9: LPI evaluated for all articles published between 2000 and 2005, shown as mean values for six  $\eta$ -journals in undisclosed order.

dozen of years have been published in non-rheological, often less specialized, journals. Such articles certainly help to consider  $\eta$ -aspects in interdisciplinary contexts. Finally, for those articles published in  $\eta$ -journals, and covered by ISI, we allow the reader to estimate the current and future relative impact of her/his articles in Fig. 10 as follows: read off a times cited value  $\alpha$  for your personal number of years of publication activity in  $\eta$ -journals. Compare this number with the mean value of citations  $\beta$  for your own publications in  $\eta$ -journals. Your article impact is above average, if  $\beta > \alpha$ . Further, you can extrapolate the total number of citations and also estimate the current and future numbers of citations per year after publication by adapting the shape. If  $\beta < \alpha$  please keep in mind that the plot is obtained from averaged data and therefore must not accomplish with your model.

## REFERENCES

### Impact Factor

- [1] Falagas ME, Zouglakis GM: Trends in the impact factor of scientific journals, Mayo Clinic. Proc. 81 (2006) 1401.
- [2] Garfield E: The history and meaning of the journal impact factor, JAMA J. Americ. Med. Assoc. 295 (2006) 90.
- [3] Lund D: Is the impact factor important?, J. Food Sci. 71 (2006) VIII
- [4] Barbui C, Cipriani A, Malvini L, Tanella, M: Validity of the impact factor of journals as a measure of randomized controlled trial quality, J. Clinical Psychiat. 67 (2006) 37.
- [5] Kröger M: Publication specific impact of articles published by rheological journals, Appl. Rheol. 15 (2005) 406.
- [6] Garfield E: Journal impact factor: a brief review, Canad. Med. Assoc. J. 161 (1999) 979.
- [7] Seglen, PO: Why the impact factor of journals should not be used for evaluating research, Brit. Med. J. 314 (1997) 498
- [8] Opthof T: Sense and nonsense about the impact factor, Cardiovasc. Res. 33 (1997) 1
- [9] Stegmann J: How to evaluate journal impact factors, Nature 390 (1997) 550.

- [10] Cole S: Citations and the evaluation of individual scientists, Trends Biochem Sci 14 (1989) 9.

### $\eta$ -journals: Top LPI articles of the years 1996 - 2004

- [11] Maffettone PL, Greco F: Ellipsoidal drop model for single drop dynamics with non-Newtonian fluids, J. Rheol. 48 (2004) 83.
- [12] Larson RG, Sridhar T, Leal LG, McKinley GH, Likhtman AE, McLeish TCB: Definitions of entanglement spacing and time constants in the tube model, J. Rheol. 47 (2003) 809.
- [13] Raynaud JS, Moucheront P, Baudez JC, Bertrand F, Guilbaud JP, Coussot P: Direct determination by nuclear magnetic resonance of the thixotropic and yielding behavior of suspensions, J. Rheol. 46 (2002) 709.
- [14] Lim YT, Park OO: Phase morphology and rheological behavior of polymer/layered silicate nanocomposites, Rheol. Acta 40 (2001) 220.
- [15] Fielding SM, Sollich P, Cates ME: Aging and rheology in soft materials, J. Rheol. 44 (2000) 323.
- [16] Barnes HA: The yield stress - a review or 'pi alpha nu tau alpha rho epsilon iota' - everything flows?, J. Non-Newt. Fluid Mech. 81 (1999) 133.
- [17] McLeish TCB, Larson RG: Molecular constitutive equations for a class of branched polymers: The pom-pom polymer, J. Rheol. 42 (1998) 81.
- [18] Barnes HA: Thixotropy - A review, J. Non-Newt. Fluid Mech. 70 (1997) 1.
- [19] Vinckier I, Moldenaers P, J. Mewis: Relationship between rheology and morphology of model blends in steady shear flow, J. Rheol. 40 (1996) 613.
- [20] Barnes HA: A review of the slip (wall depletion) of polymer-solutions, emulsions and particle suspensions in viscometers - its cause, character, and cure, J. Non-Newt. Fluid Mech. 56 (1995) 221.

### $\eta$ -journals: High LPI in 2005

- [21] Larson RG, The rheology of dilute solutions of flexible polymers: Progress and problems, J. Rheol. 49 (2005) 1.
- [22] Abdel-Goad M, Pötschke P: Rheological characterization of melt processed polycarbonate-multiwalled carbon nanotube composites, J. Non-Newt. Fluid Mech. 128 (2005) 2.
- [23] Venerus DC: A critical evaluation of step strain flows of entangled linear polymer liquids, J. Rheol. 49 (2005) 277.
- [24] Hulslen MA, Fattal R, Kupferman R: Flow of viscoelastic fluids past a cylinder at high Weis-

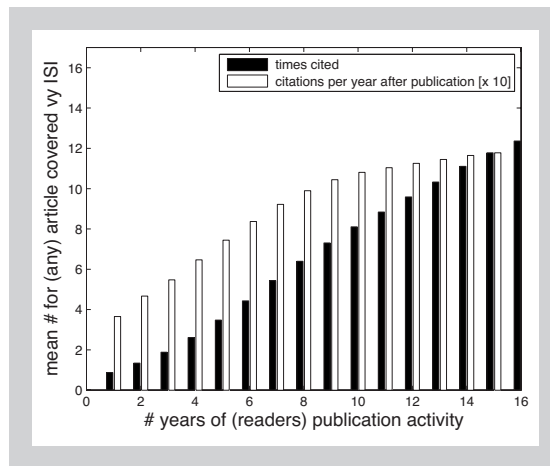


Figure 10:  
For those articles published in  $\eta$ -journals, and covered by ISI, the reader can easily estimate the current and future relative impact of her/his articles by using this graph as described in the final text paragraph.

senberg number: Stabilized simulations using matrix logarithms, *J. Non-Newt. Fluid Mech.* 127 (2005) 27.

- [25] Park SJ, Shanbhag S, Larson RG: A hierarchical algorithm for predicting the linear viscoelastic properties of polymer melts with long-chain branching, *Rheol. Acta* 44 (2005) 319.
- [26] Uhlherr PHT, Guo J, Tiu C, Zhang XM, Zhou JZQ, Fang TN: The shear-induced solid-liquid transition in yield stress materials with chemically different structures, *J. Non-Newt. Fluid Mech.* 125 (2005) 101.
- [27] Rodd LE, Scott TP, Cooper-White JJ, McKinley GH: Capillary break-up rheometry of low-viscosity elastic fluids, *Appl. Rheol.* 15 (2005) 12.
- [28] Hadinata C, Gabriel C, Ruellman M, Laun HM: Comparison of shear-induced crystallization behavior of PB-1 samples with different molecular weight distribution, *J. Rheol.* 49 (2005) 327.
- [29] Rasmussen HK, Nielsen JK, Bach A, Hassager O: Viscosity overshoot in the start-up of uniaxial elongation of low density polyethylene melts, *J. Rheol.* 49 (2005) 369.
- [30] Lacoste C, Choplin L, Cassagnau P, Michel A: Rheology innovation in the study of mixing conditions of polymer blends during chemical reaction, *Appl. Rheol.* 15 (2005) 314.

**Recent Applied Rheology articles matching high LPI criteria (Figs. 1 - 8) :**

- [31] Ng TSK, McKinley GH et al.: Linear to non-linear rheology of wheat flour dough, *Appl. Rheol.* 16 (2006) 265.
- [32] Roos H, Bolmstedt U, Axelsson A: Evaluation of new methods and measuring systems for characterisation of flow behaviour of complex foods, *Appl. Rheol.* 16 (2006) 19.
- [33] Chai CK, Ang SC: An evaluation of dilution rheology for the characterization of long chain branching of polyethylenes, *Appl. Rheol.* 16 (2006) 90.
- [34] Anderson PD, Dooley J, Meijer HEH: Viscoelastic effects in multilayer polymer extrusion, *Appl. Rheol.* 16 (2006) 198.
- [35] Fisher DT, Boger DV, Scales PJ: Measurement errors in yield stress rheometry that arise from torque auto zero, *Appl. Rheol.* 16 (2006) 206.
- [36] Vananroye A, Puyvelde PV, Moldenaers P: Morphology development during microconfined flow of viscous emulsions, *Appl. Rheol.* 16 (2006) 242.

- [37] Perona P: Bostwick degree and rheological properties: An up-to-date viewpoint, *Appl. Rheol.* 15 (2005) 218.
- [38] Phan TH, Chaouche M: Rheology and stability of self-compacting concrete cement pastes, *Appl. Rheol.* 15 (2005) 336.
- [39] Lionetto F, Montagna F, Maffezzoli A: Ultrasonic dynamic mechanical analysis of polymers, *Appl. Rheol.* 15 (2005) 326.
- [40] Götz J, Rewesa L, Walch M, Geissler A: Influence of an ultrasonic treatment on the structure and flow behaviour of oxide ceramic masses, *Appl. Rheol.* 15 (2005) 204.

**All journals: Most cited rheology keyworded articles, if not listed above (1996 - 2005):**

- [41] McKee MG, Unal S, Wilkes GL, Long TE: Branched polyesters: recent advances in synthesis and performance, *Prog. Polym. Sci.* 30 (2005) 507.
- [42] Kröger M: Simple models for complex nonequilibrium fluids, *Phys. Rep.* 390 (2004) 453.
- [43] Ray SS: Polymer/layered silicate nanocomposites: a review from preparation to processing, *Prog. Polym. Sci.* 28 (2003) 1539.
- [44] Berthier L, Barrat JL: Nonequilibrium dynamics and fluctuation-dissipation relation in a sheared fluid, *J. Chem. Phys.* 116 (2002) 6228.
- [45] Fornes TD, Yoon PJ, Keskkula J et al.: Nylon 6 nanocomposites: the effect of matrix molecular weight, *Polymer* 42 (2001) 9929.
- [46] Ren JX, Silva AS, Krishnamoorti R: Linear viscoelasticity of disordered polystyrene-polyisoprene block copolymer based layered-silicate nanocomposites, *Macromolecules* 33 (2000) 3739.
- [47] Saunders BR, Vincent B: Microgel particles as model colloids: theory, properties and applications, *Adv. Coll. Interf. Sci.* 80 (1999) 1.
- [48] Sollich P: Rheological constitutive equation for a model of soft glassy materials, *Phys. Rev. E* 58 (1998) 738.
- [49] Krishnamoorti R, Giannelis EP: Rheology of end-tethered polymer layered silicate nanocomposites, *Macromolecules* 30 (1997) 4097
- [50] Hirth G, Kohlstedt DL: Water in the oceanic upper mantle: Implications for rheology, melt extraction and the evolution of the lithosphere, *Earth Planet. Sci.* 144 (1996) 93.

